



Tissue Inhibitor of Metalloproteinases 1(PT2236) mouse mAb

Catalog No	YP-Ab-15422
Isotype	IgG
Reactivity	Human
Applications	IHC;IF
Gene Name	TIMP1 CLGI TIMP
Protein Name	Metalloproteinase inhibitor 1 (Erythroid-potentiating activity) (EPA) (Fibroblast collagenase inhibitor) (Collagenase inhibitor) (Tissue inhibitor of metalloproteinases 1) (TIMP-1)
Immunogen	Synthesized peptide derived from human Tissue Inhibitor of Metalloproteinases 1(TIMP1)
Specificity	This antibody detects endogenous levels of human Metalloproteinase inhibitor 1 (Erythroid-potentiating activity) (EPA) (Fibroblast collagenase inhibitor) (Collagenase inhibitor) (Tissue inhibitor of m
Formulation	Liquid in PBS containing 50% glycerol, 0.5% BSA and 0.02% sodium azide.
Source	Mouse, Monoclonal/IgG1, Kappa
Purification	The antibody was affinity-purified from mouse ascites by affinity-chromatography using specific immunogen.
Dilution	WB 500-2000 IHC-p 1:100-500. IF 1:50-200
Concentration	1 mg/ml
Purity	≥90%
Storage Stability	-20°C/1 year
Synonyms	
Observed Band	
Cell Pathway	Secreted .
Tissue Specificity	Detected in rheumatoid synovial fluid (at protein level).
Function	function:Complexes with metalloproteinases (such as collagenases) and irreversibly inactivates them. Also mediates erythropoiesis in vitro; but, unlike IL-3, it is species-specific, stimulating the growth and differentiation of only human and murine erythroid progenitors. Known to act on MMP-1, MMP-2, MMP-3, MMP-7, MMP-8, MMP-9, MMP-10, MMP-11, MMP-12, MMP-13 and MMP-16. Does not act on MMP-14.,PTM:The activity of TIMP1 is dependent on the presence of disulfide bonds.,similarity:Belongs to the protease inhibitor I35 (TIMP) family.,similarity:Contains 1 NTR domain.,
Background	This gene belongs to the TIMP gene family. The proteins encoded by this gene family are natural inhibitors of the matrix metalloproteinases (MMPs), a group of



peptidases involved in degradation of the extracellular matrix. In addition to its inhibitory role against most of the known MMPs, the encoded protein is able to promote cell proliferation in a wide range of cell types, and may also have an anti-apoptotic function. Transcription of this gene is highly inducible in response to many cytokines and hormones. In addition, the expression from some but not all inactive X chromosomes suggests that this gene inactivation is polymorphic in human females. This gene is located within intron 6 of the synapsin I gene and is transcribed in the opposite direction. [provided by RefSeq, Jul 2008],

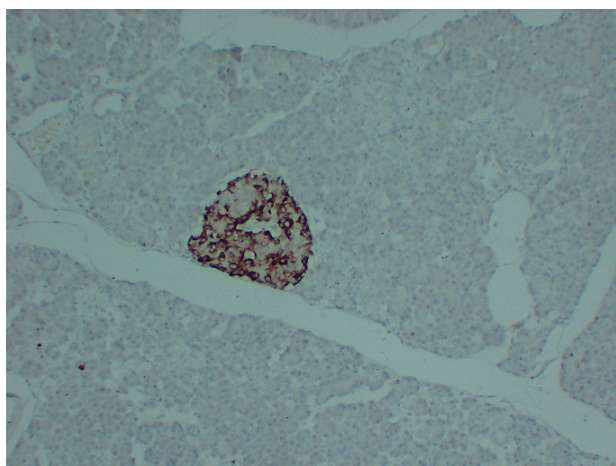
matters needing attention

Avoid repeated freezing and thawing!

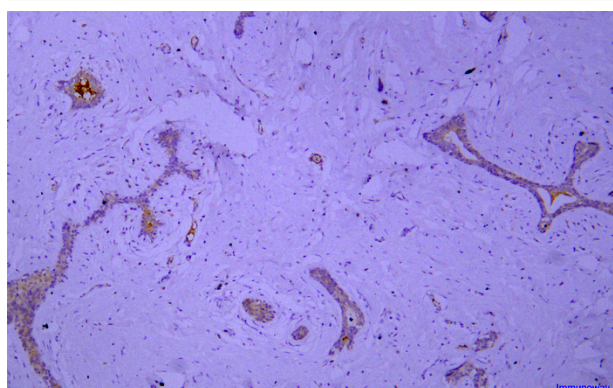
Usage suggestions

This product can be used in immunological reaction related experiments. For more information, please consult technical personnel.

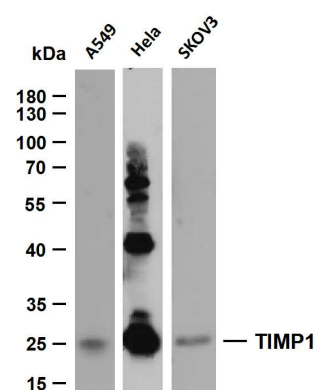
Products Images



Immunohistochemical analysis of paraffin-embedded human Pancreas. 1, Tissue Inhibitor of Metalloproteinases 1 (TIMP1) Antibody was diluted at 1:200 (4° overnight). 2, Citrate buffer of pH6.0 was used for antigen retrieval



Immunohistochemical analysis of paraffin-embedded human breast. Antibody was diluted at 1:200 (4° overnight).



Various whole cell lysates were separated by 10% SDS-PAGE, and the membrane was blotted with anti-TIMP1 (PT2236) antibody. The HRP-conjugated Goat anti-Mouse IgG (H + L) antibody was used to detect the antibody. Lane 1: A549 Lane 2: HeLa Lane 3: SKOV3 Predicted band size: 23kDa Observed band size: 23kDa